



# MOVILLA

## HIGH SCHOOL



*“Learning today - Leading tomorrow”*



# WELCOME TO MOVILLA HIGH SCHOOL



**Thank you for your interest in Movilla High School. We trust you will find our 2026 prospectus helpful as an introduction to life in our school.**



## CONTENTS

Keystage 3 - Curriculum.....	3
Keystage 4 -Curriculum.....	4
Pastoral Care.....	5
Pastoral Aims.....	7
Pastoral Support for Year 8 Pupils.....	8
Specialist Provision.....	9
Extra Curriculum Activities.....	10
Educational Trips.....	12
Caring Community.....	13

Movilla High School maintains the tradition of education in Newtownards that was established with the ancient abbey site located close to the school. When Lady Edith Londonderry (Mountstewart is the ancestral home) laid the foundation stone of the current building in 1932, there was a clear message being sent to the people of the town and beyond, that education of their children mattered. That message still resounds loudly and clearly today. The school celebrated 90 years of continuous education on the same site in 2022. We aim to provide an inclusive, child-centred environment in which all students achieve their full potential and develop into aspirational young adults with a real “can-do” attitude. The curriculum offer within the school provides an opportunity for all pupils to succeed whether their strengths are vocational, academic or a combination of both.

We hope that you feel very welcome as you visit our school and sense the strong relationships that permeate the school community. Please also take the opportunity to access our website for further information at:

[www.movillahighschool.org](http://www.movillahighschool.org)

**Dr CJ Greer (Principal)**







## KEYSTAGE 3 CURRICULUM

*"Broad and Balanced"*

Pupils in Years 8, 9 and 10 are offered a relevant, broad and engaging curriculum delivered in a stimulating environment.

	ENGLISH	English Drama
	MATHEMATICS	Mathematics
	SCIENCE & TECHNOLOGY	Science Technology & Design
	ENVIRONMENT & SOCIETY	History Geography Home Economics
	CREATIVE & EXPRESSIVE	Art & Design Music Physical Education
	LANGUAGE STUDIES	French
	LEARNING FOR LIFE & WORK	Personal Development Citizenship Employability I.T. Skills
	RELIGIOUS EDUCATION	Religious Education
	PHYSICAL EDUCATION	Physical Education







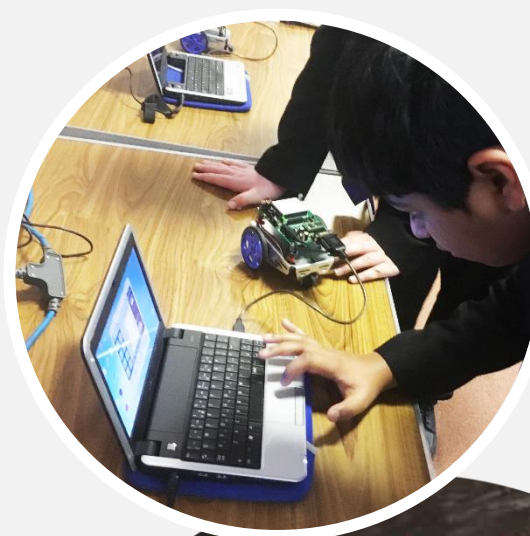
## KEYSTAGE 4 CURRICULUM

*"Opening doors for future careers"*

**A wide range of GCSE and Level 2 academic, applied and vocational qualifications are offered to our Key Stage 4 students.**

In addition to the core subjects of English Language, Mathematics, ICT, Science, Religious Education, Personal Development, and Physical Education, students can choose from the following options:

- GCSE Art
- GCSE Biology
- GCSE Business and Communication Systems
- GCSE Child Development
- GCSE Double Award Science
- GCSE Drama
- GCSE English Literature
- GCSE French
- GCSE Geography
- GCSE History
- GCSE Music
- GCSE Physical Education
- Person Edexcel GCSE Design and Technology
- Occupational Studies: Carpentry and Bench Joinery
- Occupational Studies: Patisserie and Contemporary Cuisine
- Occupational Studies: The Play Environment and The Physical Care of Babies
- BTEC Level 2 Sport Studies
- OCN Level 2 Certificate in Sports Studies
- OCN Level 2 Certificate in Vocational Studies
- BTEC Level1/Level2 Tech Award in Performing Arts
- King's Trust





## PASTORAL CARE

*"Developing the whole individual"*

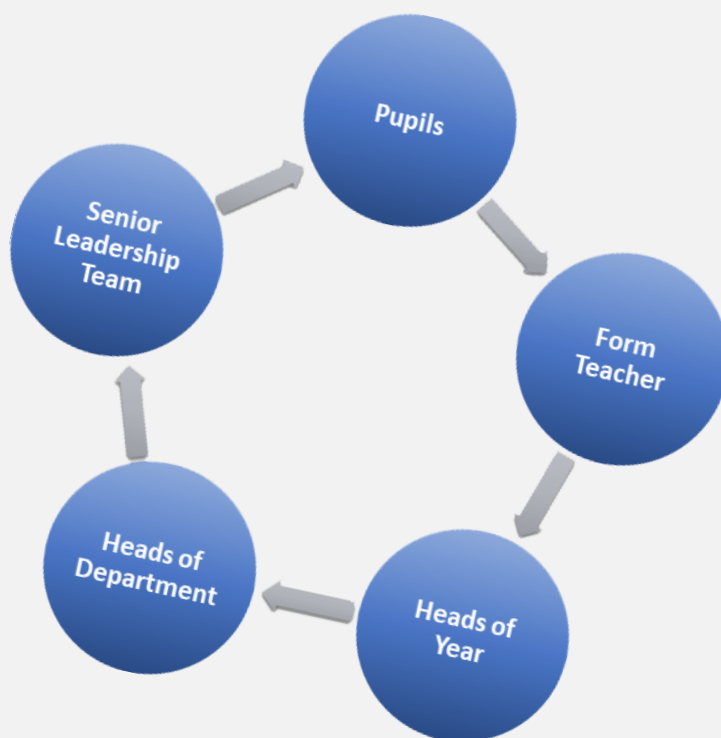
**At Movilla High School, our aim to "develop the whole individual" is entrusted to all our staff, whether in or out of the classroom.**

### PASTORAL CARE

It is a duty of care which we take very seriously and we have an overriding aim to ensure that our pupils' well-being translates into academic success and high level attainment.

Each pupil is placed in a form class with a dedicated member of staff who is responsible for the day to day welfare of their pupils.

They are supported by a Head of Year.



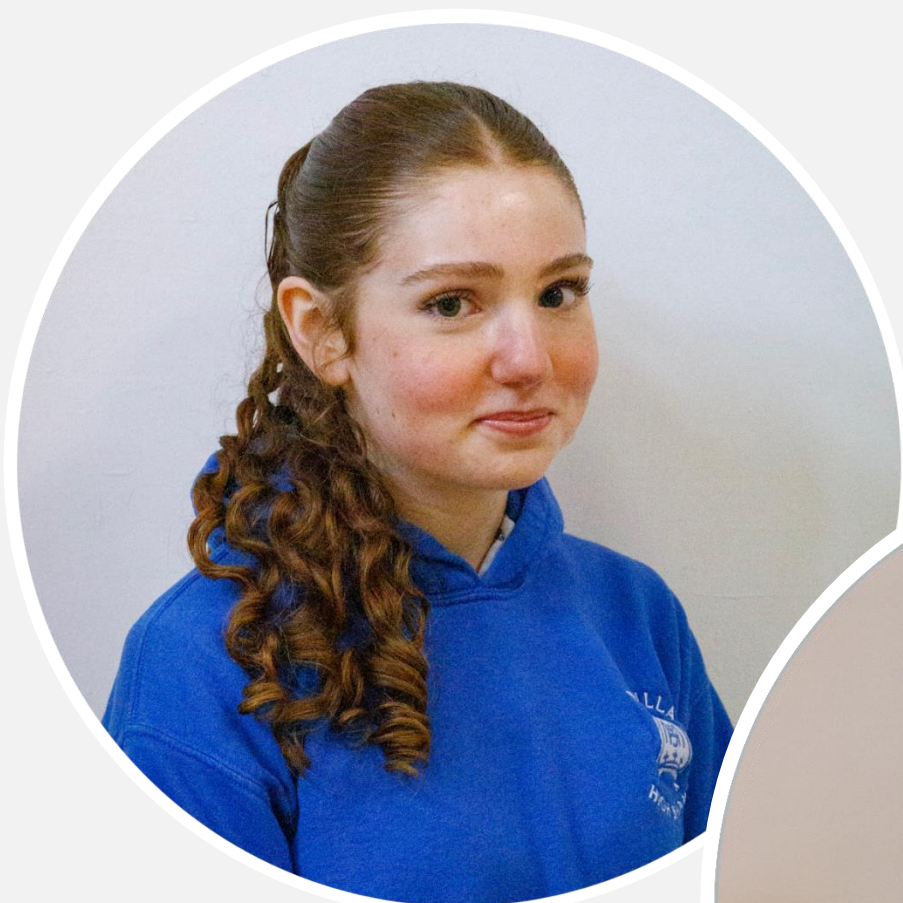
Heads of Department also play a significant role in ensuring the pastoral welfare of pupils maximises their potential.

Additionally, a wide-ranging pastoral support network aims to provide a comprehensive range of services using both in-house and external expertise.

The school has an Autism Specific Centre for pupils with Social and Communication statements. Additionally, a team of classroom assistants support pupils.







**CASTLE**

**LONDONDERRY**

**GLEN**

**VICTORIA**



Each house wears a tie of a different colour and is represented by a House Co-ordinator, House Captains and Deputies.





## PASTORAL AIMS

*"Challenged, aspirational and equipped for life"*

**Our pastoral structure and support mechanisms support the development of our pupils as young people and as learners.**

We acknowledge the need to support our pupils to manage their teenage development, preparing them to be aspirational, confident and articulate young people able to accept the opportunities, responsibilities and experiences of adult life.

Pupils also benefit from the experience of being allocated to a House and engage in a wide range of sporting, academic and enrichment activities encouraging healthy competition and rewarding success at both pastoral and academic levels.





## PASTORAL SUPPORT FOR OUR YEAR 8 PUPILS

In order to offer the best pastoral support to our new pupils transferring from Primary School we offer an extensive support programme.





# SPECIALIST PROVISION



## Special Educational Needs

We advocate a child-centred approach which enables every pupil to overcome any barriers to learning.

## Autism Support Centre

We have 5 ASC classes (Y8-12) which are a specialist provision for statemented pupils who need a social communication unit. Pupils have access to a smaller class and an environment which is more suited to their needs. They are taught the full curriculum which is adapted for any learning needs as well as having access to sensory or timeout rooms if needed. An experienced staff team of teachers and classroom assistants strive to create a nurturing, welcoming environment that aims to help pupils settle well and enjoy school life.

## Nurture Classes

This academic year we have established two nurture groups. These are small classes in mainstream for statemented pupils, which aim to help pupils cope with transition from P7 into Y8. Pupils have access to the full school curriculum, which is tailored for their needs and provides an environment which gives reassurance as well as a gentle introduction to school life.

## Learning Support Centre

This provision provides literacy and numeracy support to pupils who we identify as having a weakness in these areas. Pupils are withdrawn individually or in small groups to receive support a few times a week.







## EXTRA CURRICULAR ACTIVITIES

*"Developing the whole individual"*

**Our school aim of "developing the whole individual", is also evident in the large and varied extra curricular activity programme and a wide range of enrichment activities.**

We strongly believe these contribute to our pupils' personal growth and encourage engagement in new and challenging activities which are often continued as life long interests.







**Pupils can choose from an extensive array of activities to suit their individual interests and skills including:**

- Stem Club
- Girls and Boys Football
- Lego Challenge
- Choir
- Mine Craft
- Athletics Club
- Rugby
- Dodgeball
- Badminton
- Pickleball
- Keyboard Club
- Cookery Club
- Art Club
- Duke of Edinburgh Award
- Homework Club
- Subject Help Clubs
- Pupils' Council
- Scripture Union
- Library Club
- Breakfast Club







## EDUCATIONAL TRIPS and ACTIVITIES

*"Opening doors for future careers"*

### EDUCATION AND LEISURE TRIPS

There are regular opportunities for our pupils to take part in educational and leisure trips, including History and French trips, Music Theatre performances, Sporting fixtures and the bi-annual Ski Trip.



### MUSICAL AND DRAMATIC ACTIVITIES

Pupils at Movilla High School also have many opportunities to participate in musical and dramatic activities including our Performing Arts concerts, Achievement Evening and Carol Service.



### DUKE OF EDINBURGH'S AWARD

The school runs the Duke of Edinburgh's Award scheme and we offer Bronze, Silver and Gold levels to all of our pupils. Duke of Edinburgh's Award is a highly valued achievement both in school and with employers and higher education. Pupils experience expedition opportunities in North Down, the Mourne Mountains and the Lake District.





## CARING COMMUNITY

*"Leaving today – Leading tomorrow"*



### PUPIL VOICE

A vibrant Pupils' Council operates in school and comprises of pupils from each class, elected by peers. The Pupils' Council is a very valuable asset to the school as it provides vital pupil feedback on learning in the classroom, policy consultation, enrichment activities, pastoral and academic welfare issues. The members meet regularly and are invited to join the Board of Governors every year for an annual review.



### PARENT STAFF FRIENDS ASSOCIATION

Movilla High School are exceptionally grateful for the support and encouragement of a very enthusiastic and hard-working Parent Staff Friends Association who provide much needed finance and hands-on support at major school and public events. They annually organise a range of social, parent/pupil friendly events which culminate in the school's Annual Fair.



### SAFEGUARDING AND CHILD PROTECTION

The Safeguarding Team at Movilla High School comprising of a Designated Teacher, Deputy Designated Teacher, Principal and Designated Governor are entrusted to ensure the school's Safeguarding and Child Protection Policy is implemented and that our pupils and staff can learn and teach in a safe and secure environment. The school's eSafety, Safeguarding and Child Protection policies are published on the school website.







# MOVILLA

HIGH SCHOOL

Movilla High School  
Donaghadee Road  
Newtownards BT23 7HA.

Tel: 028 9181 2079

Email: [info@movilla.newtownards.ni.sch.uk](mailto:info@movilla.newtownards.ni.sch.uk)

[www.movillahighschool.org](http://www.movillahighschool.org)

